

Appendix H

Vehicle Miles Traveled, Commuting
Data, and Traffic Patterns for the
Charlotte-Gastonia-Salisbury, North
Carolina CSA

(This page intentionally left blank)

Travel Demand Model (TDM) Runs for the Charlotte-Gastonia-Salisbury Area

County	2010	2015	2025
Cabarrus	5690	6514	8140
Gaston	6663	7479	9148
Iredell (partial)	3007	3393	4068
Lincoln	2315	2680	3418
Mecklenburg	32386	35935	42310
Rowan	5262	5717	6943
Union	5293	6481	8712

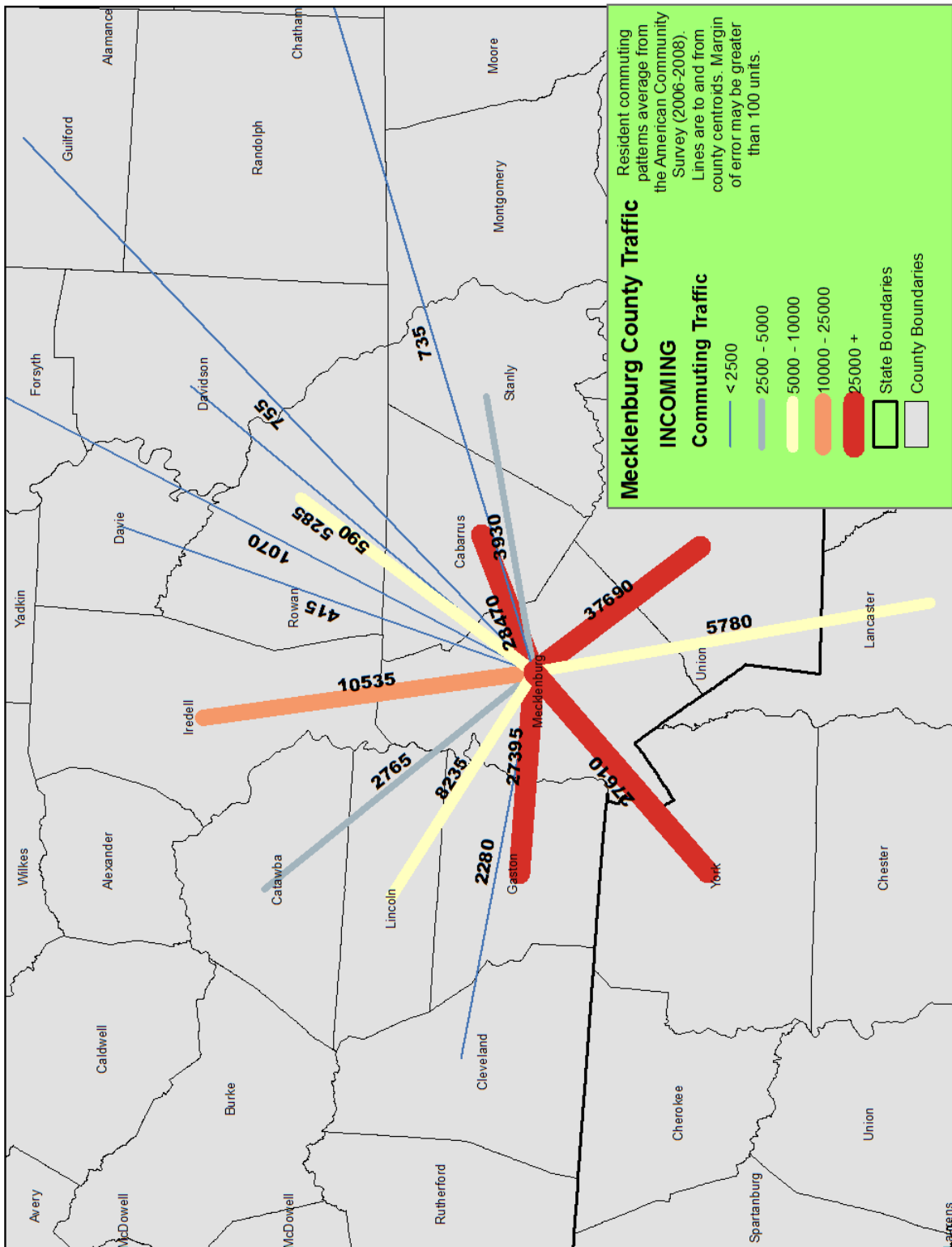
*Total miles per 1000 cars

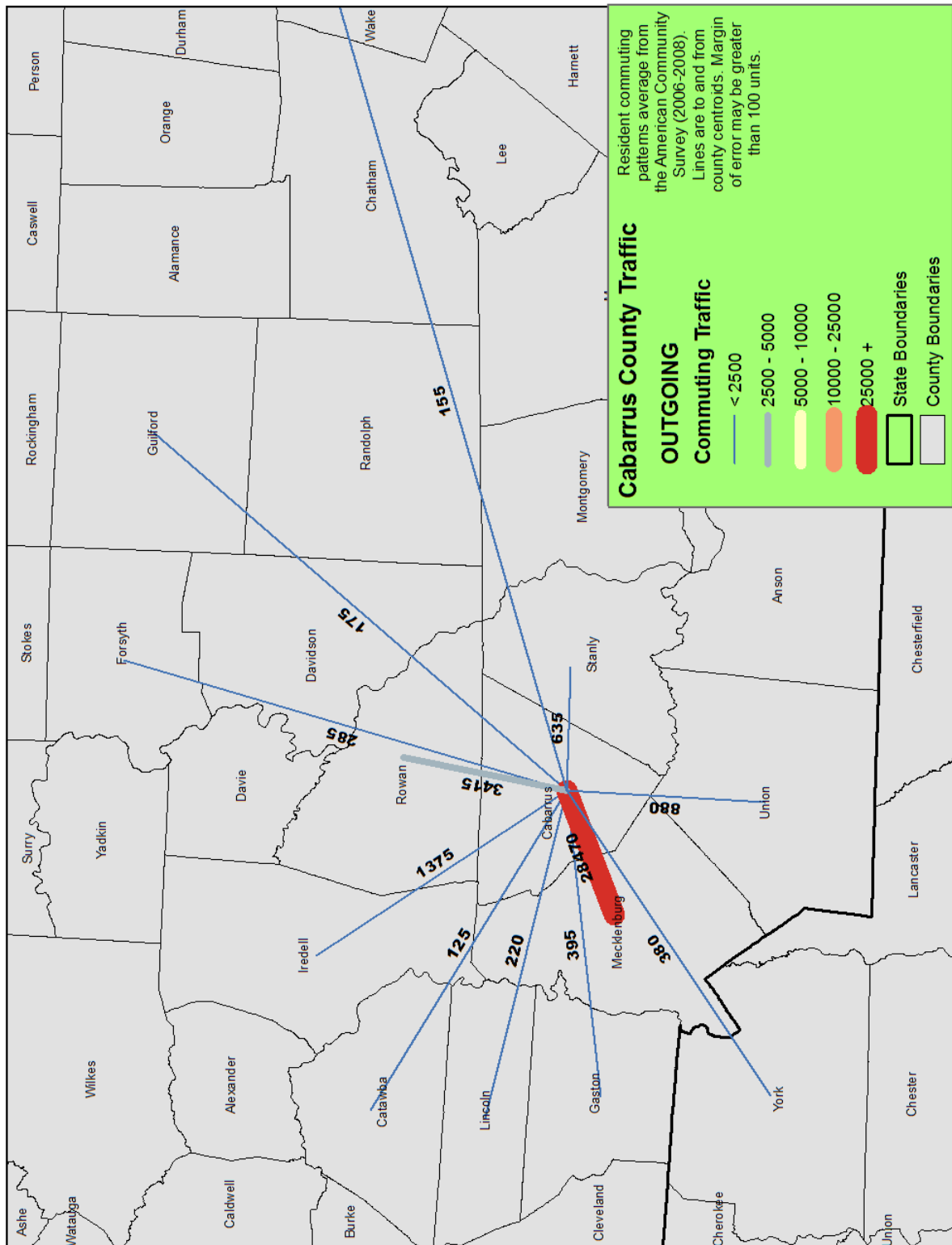
Highway Performance Monitoring System (HPMS) Runs for the Charlotte-Gastonia-Salisbury Area

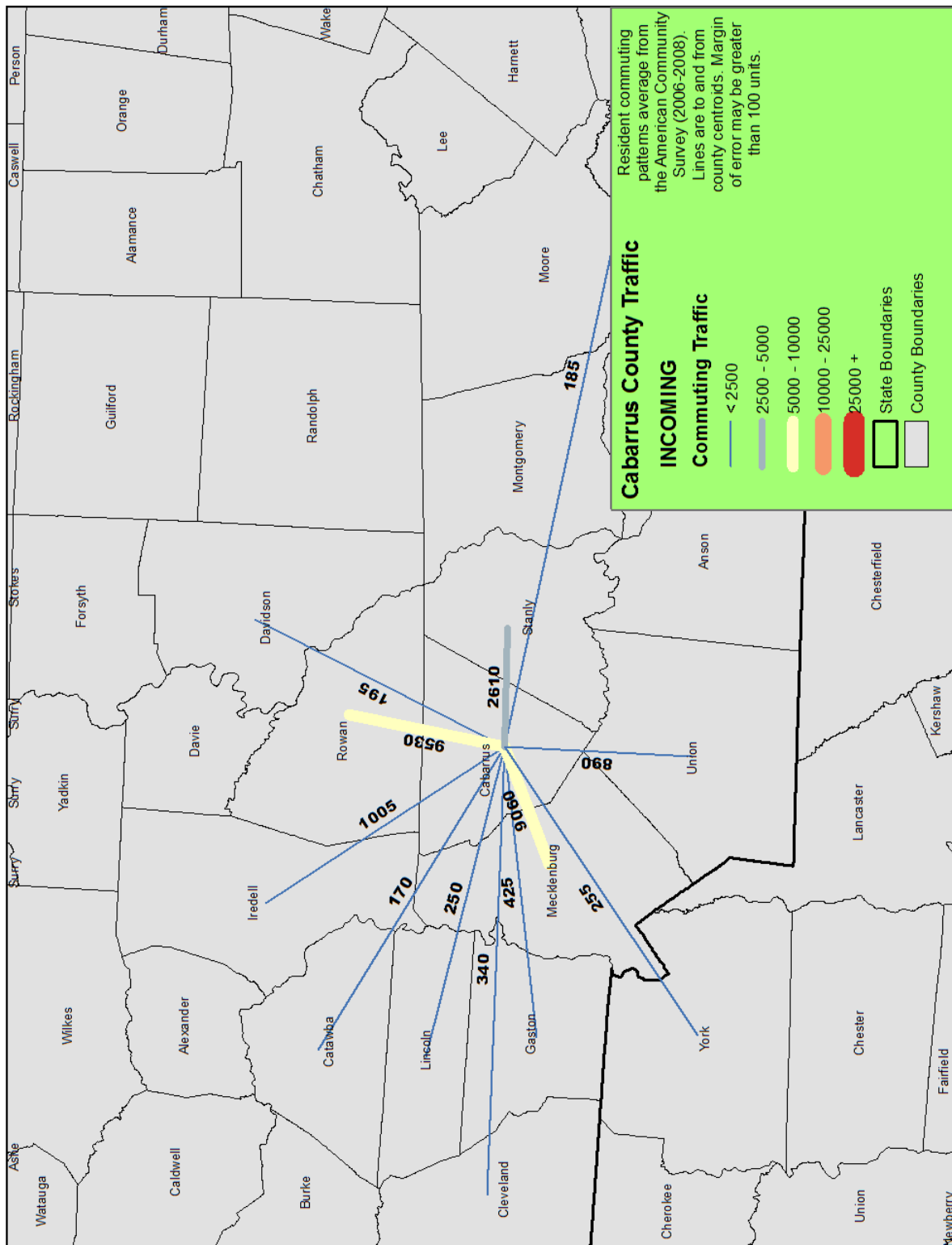
County	2010	2020
Anson	796	944
Cleveland	2678	3088
Iredell (whole)	5718	6237
Stanley	1331	1496

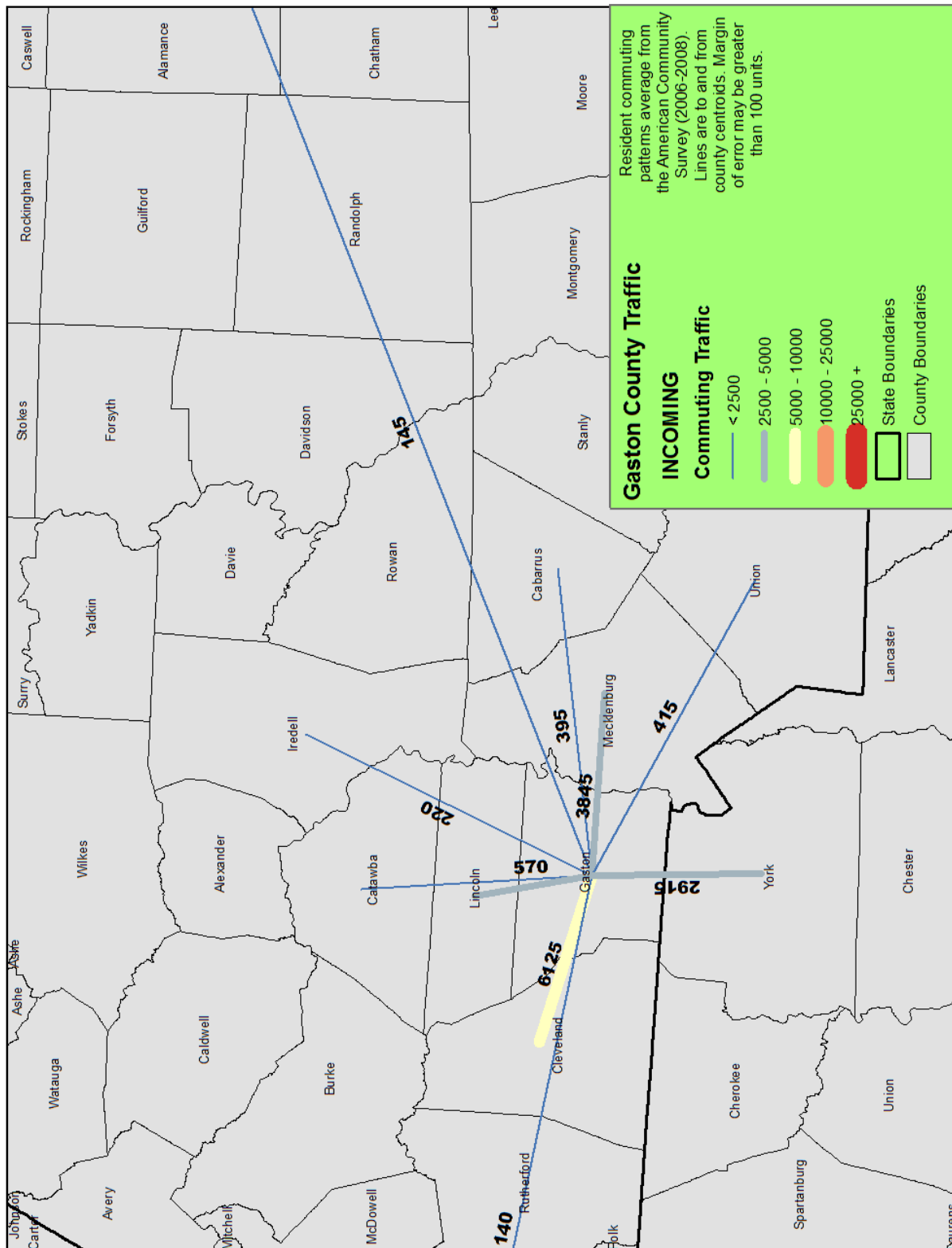
*Total miles per 1000 cars

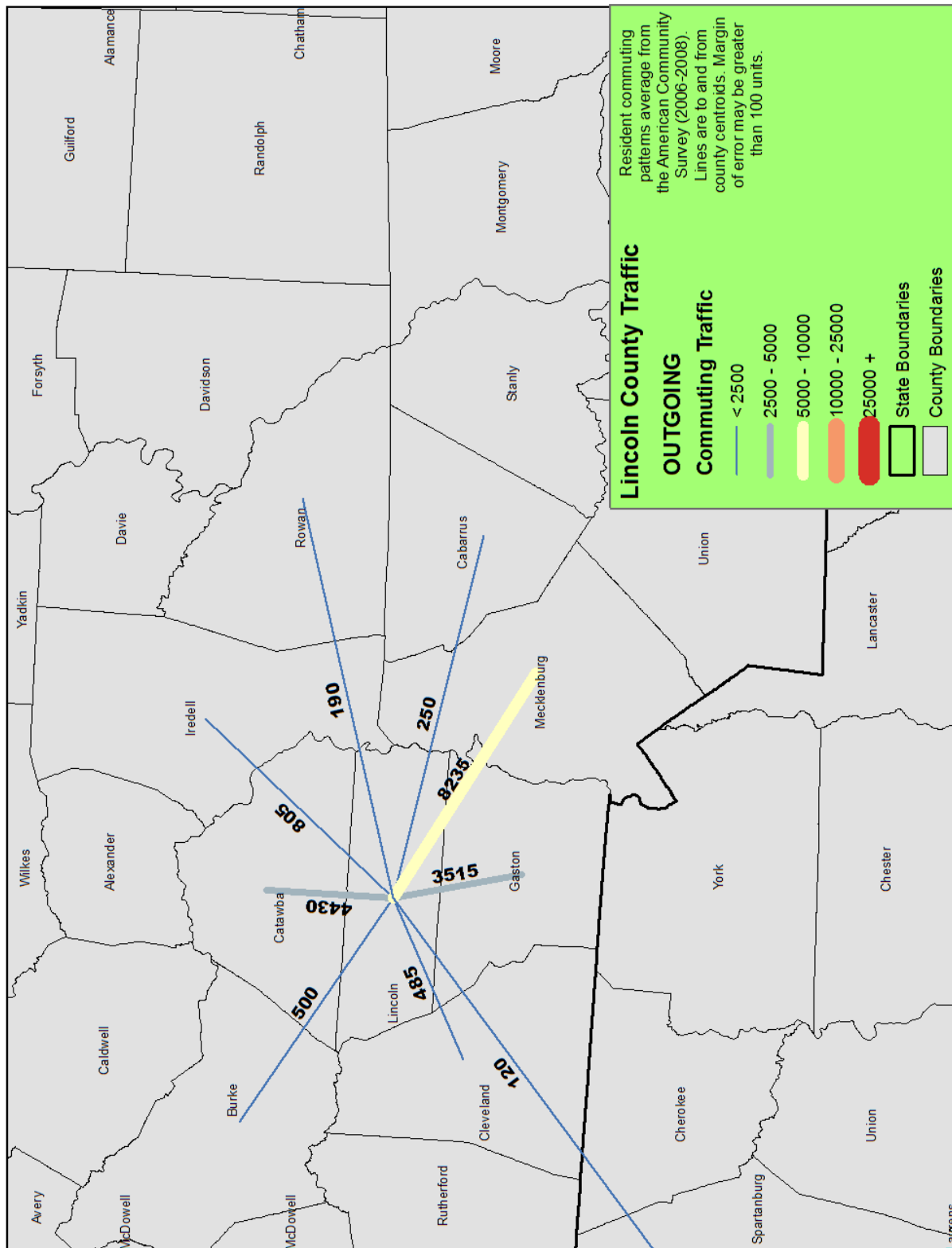
Commuting Data from the 2006-2008 US Census American Community Survey

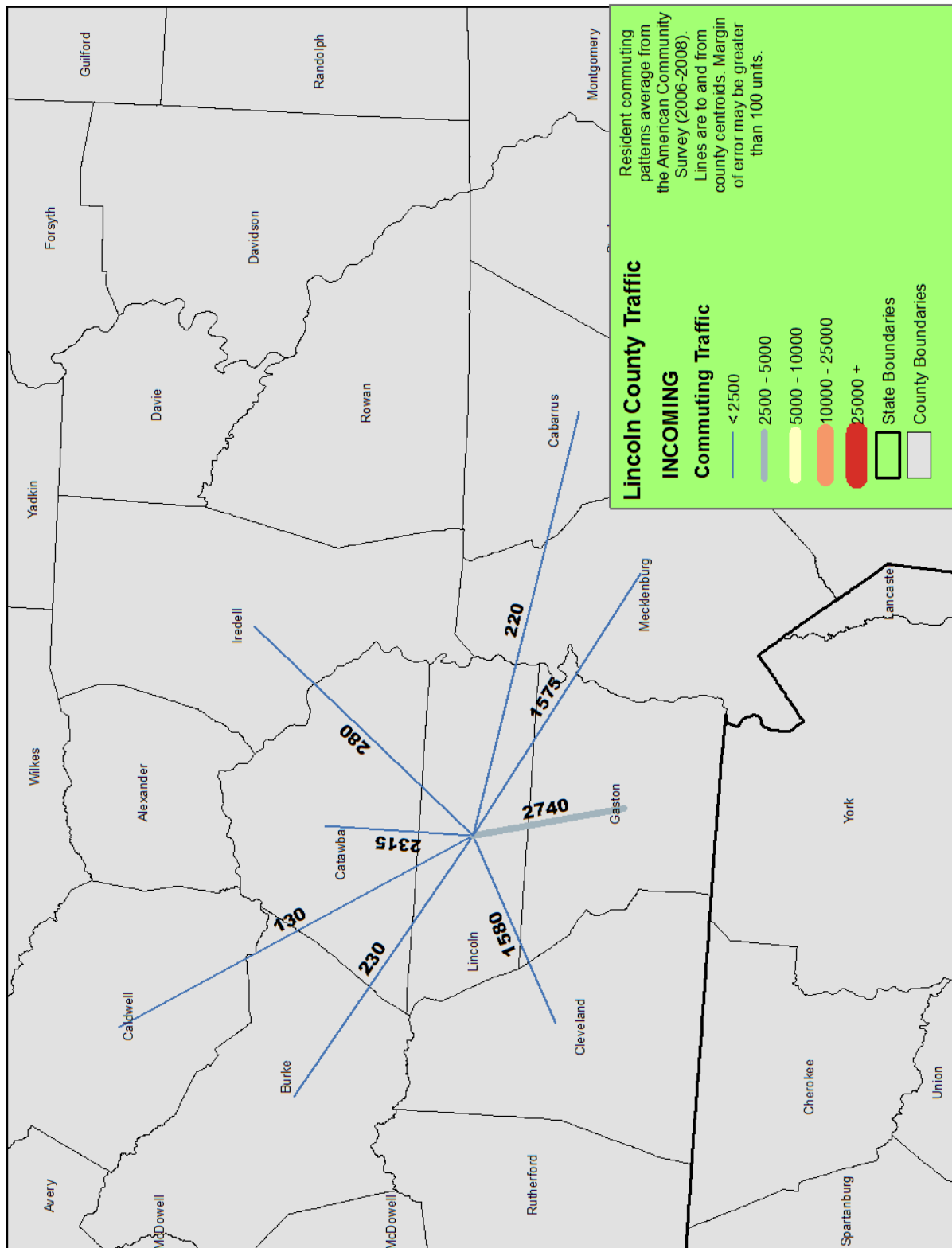


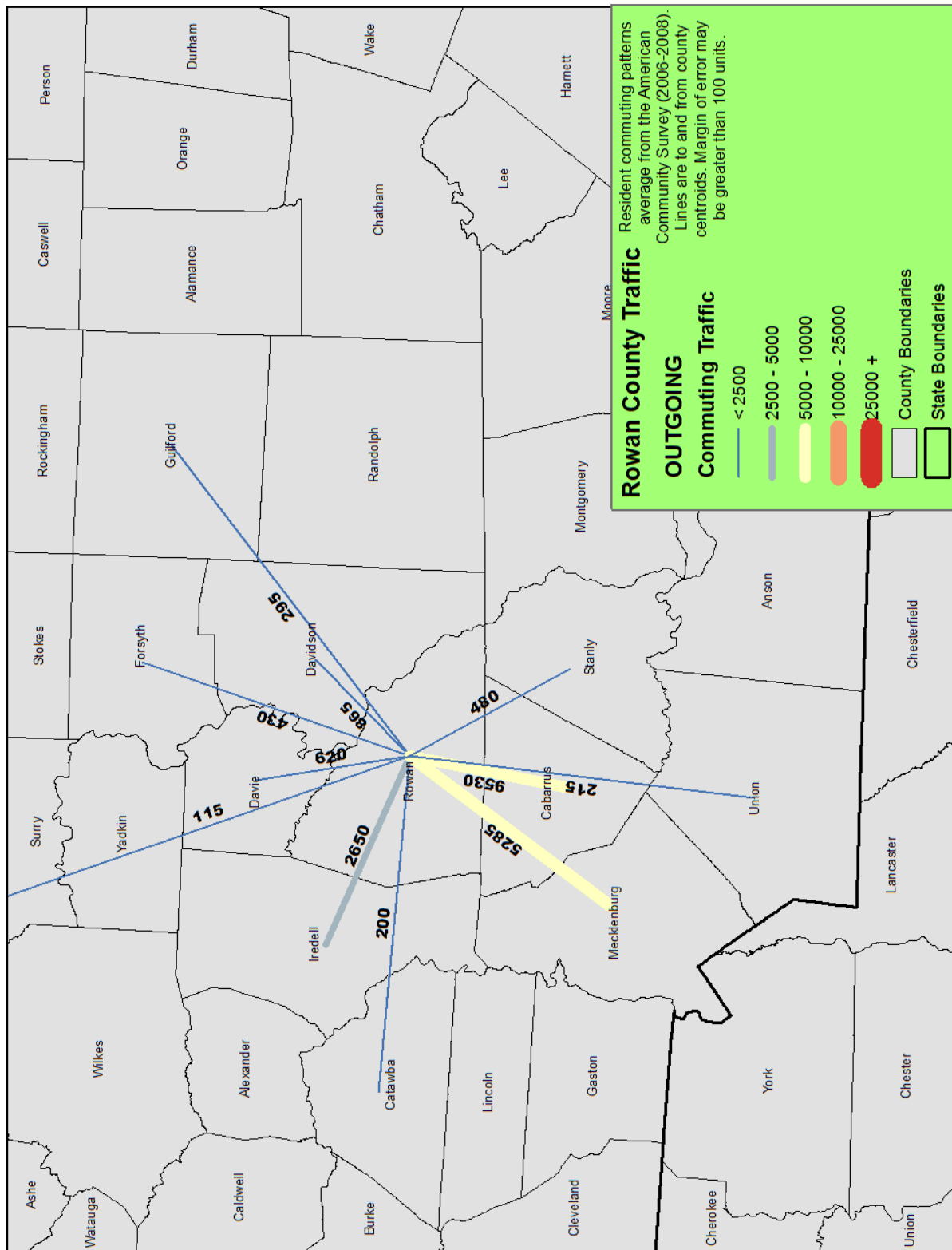


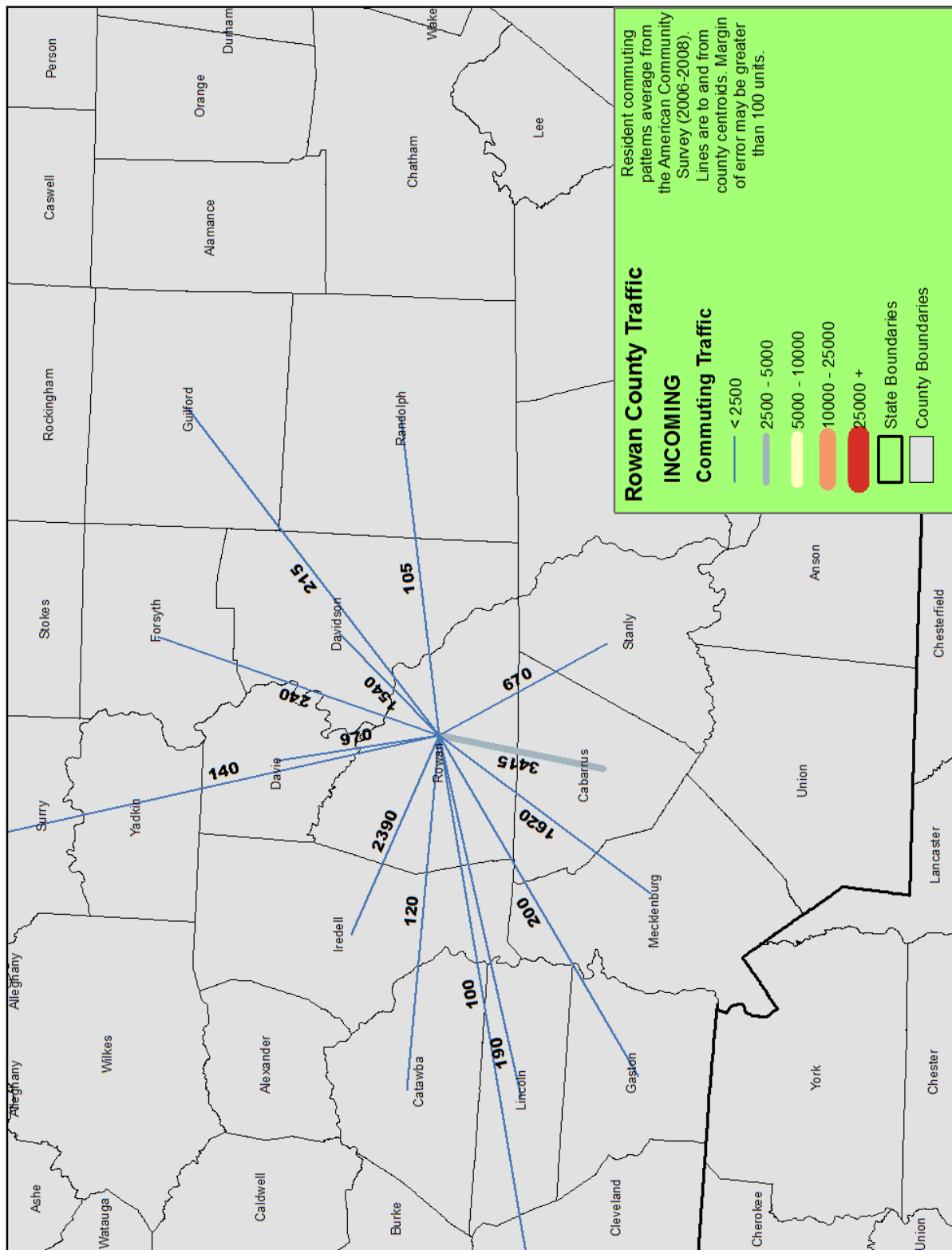


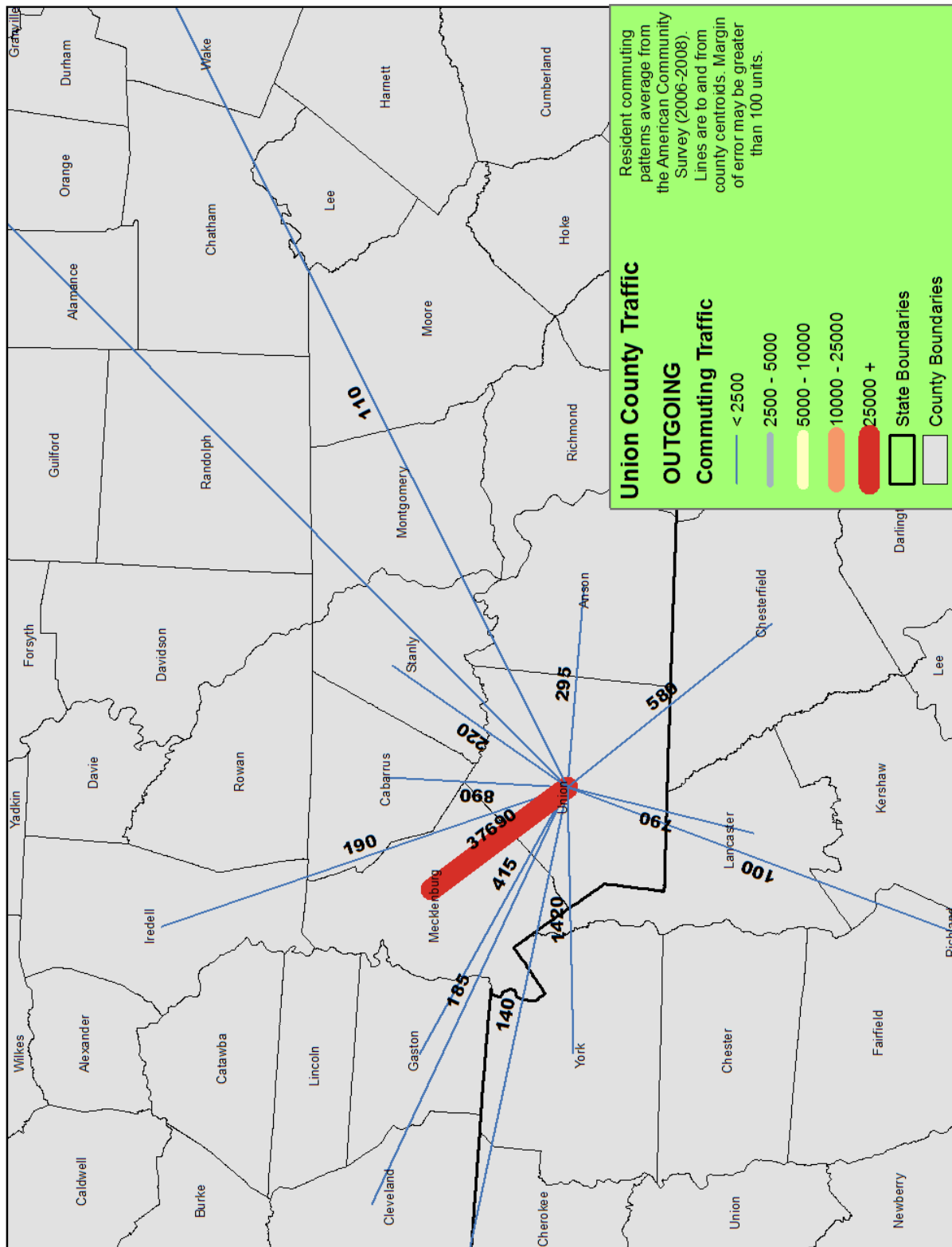


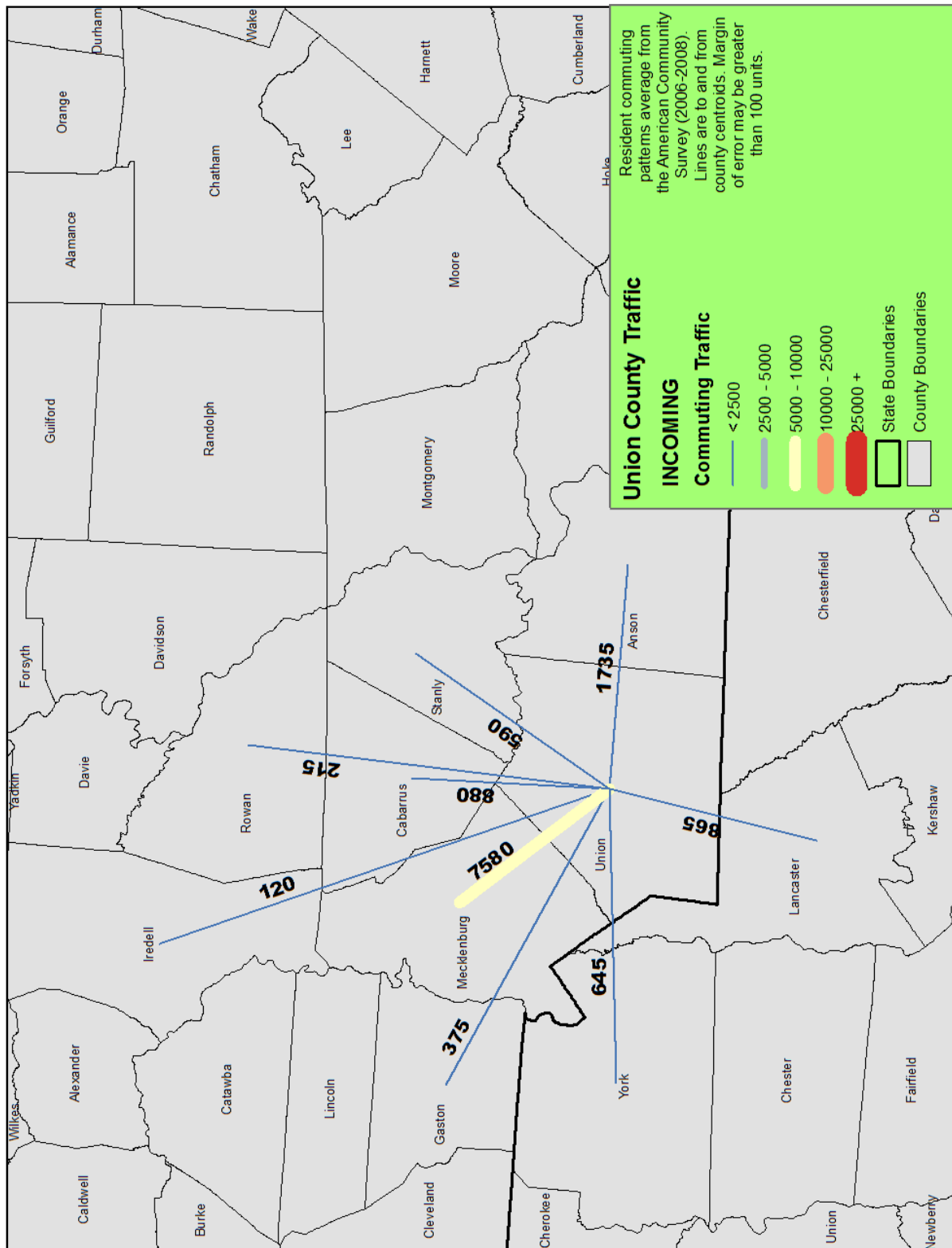


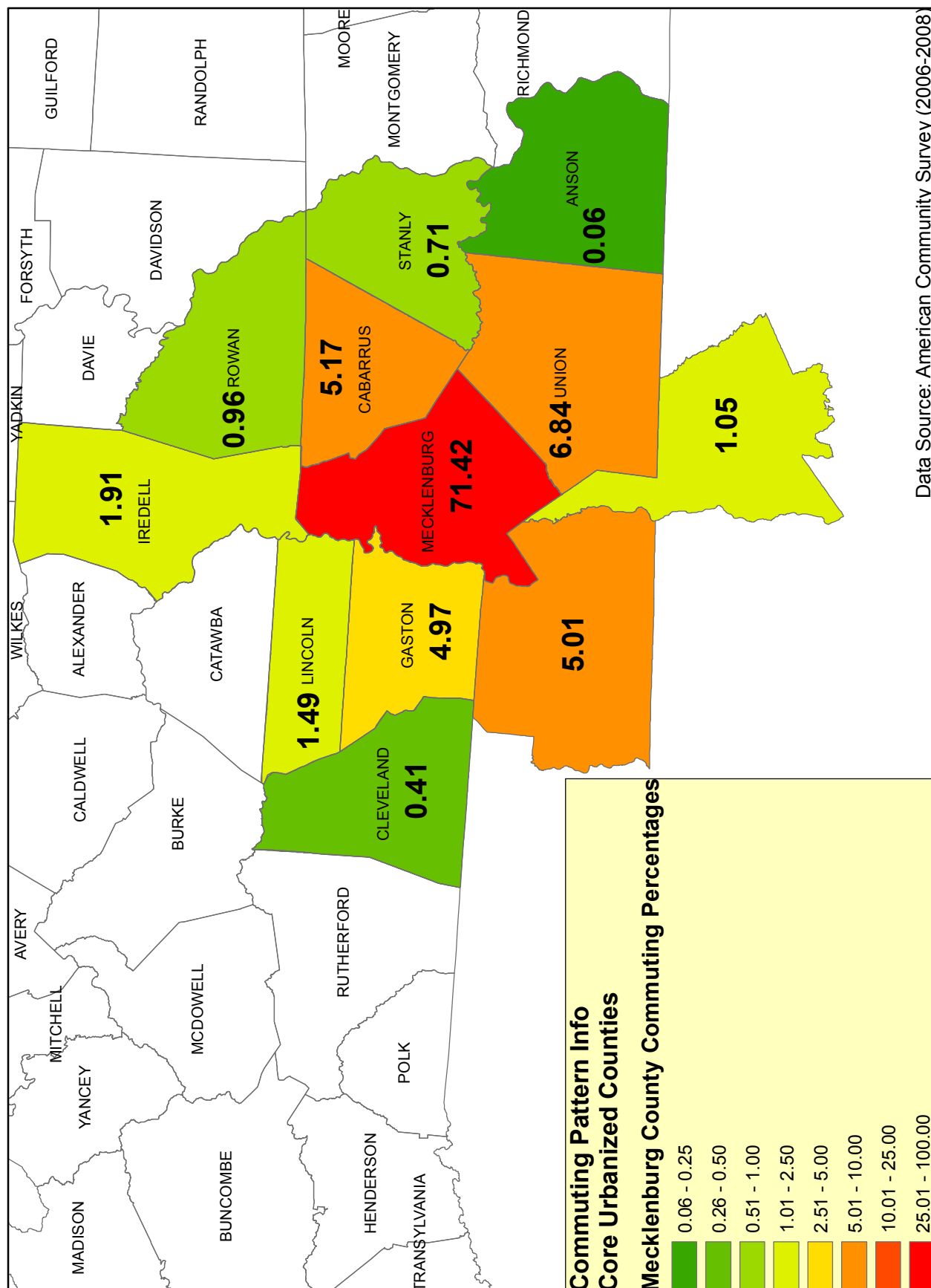












Township Commuting Estimates from the Travel Demand Model

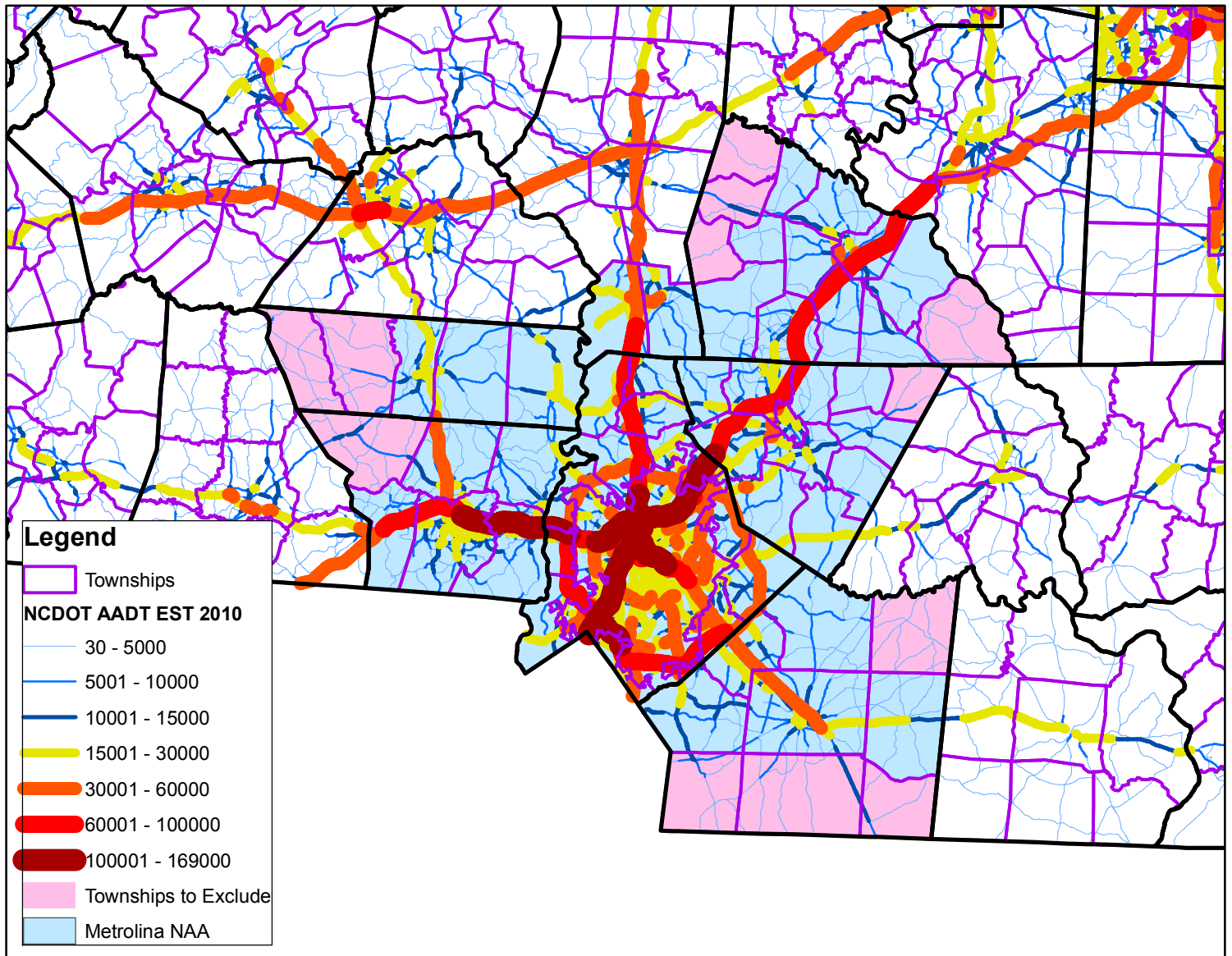
County	Township	Estimated Trips to Mecklenburg County	% of County Total	% of CSA total
Cabarrus	Gold Hill	85.9	0.30%	0.02%
Gaston	Cherryville	807.3	2.95%	0.16%
Lincoln	Howards Creek	177.8	2.16%	0.03%
Lincoln	North Brook	53.4	0.65%	0.01%
Rowan	Morgan	39.4	0.75%	0.01%
Rowan	Mount Ulla	53.5	1.01%	0.01%
Rowan	Scotch Irish	6.4	0.12%	0.00%
Union	Buford	896.3	2.38%	0.18%
Union	Jackson	1563.2	4.15%	0.31%
Union	Lanes Creek	57.0	0.15%	0.01%
Union	New Salem	398.8	1.06%	0.08%

2010 Average Annual Daily Traffic (AADT) Count Maps

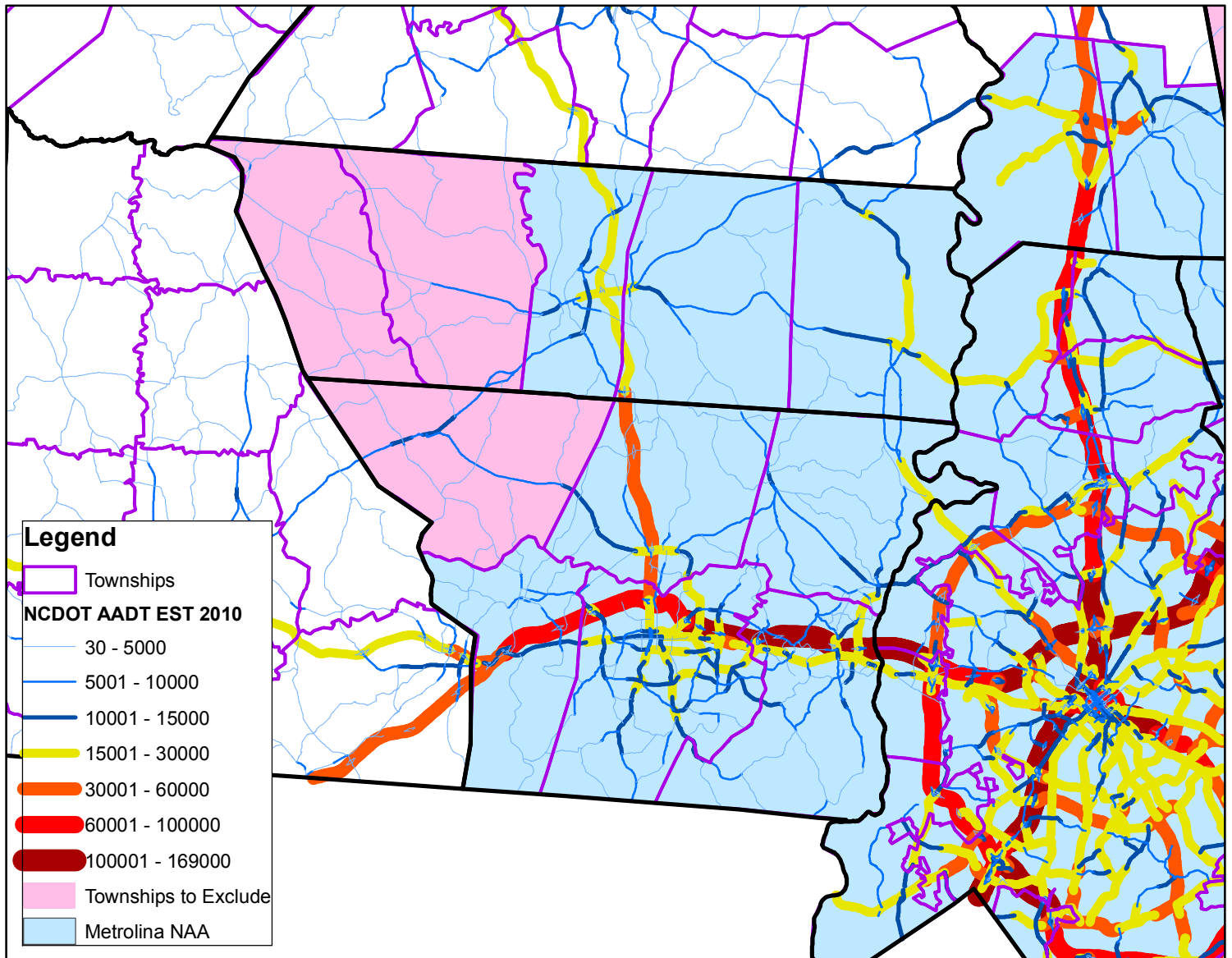
Source: NCDOT

http://www.ncdot.org/doh/preconstruct/tpb/traffic_survey/

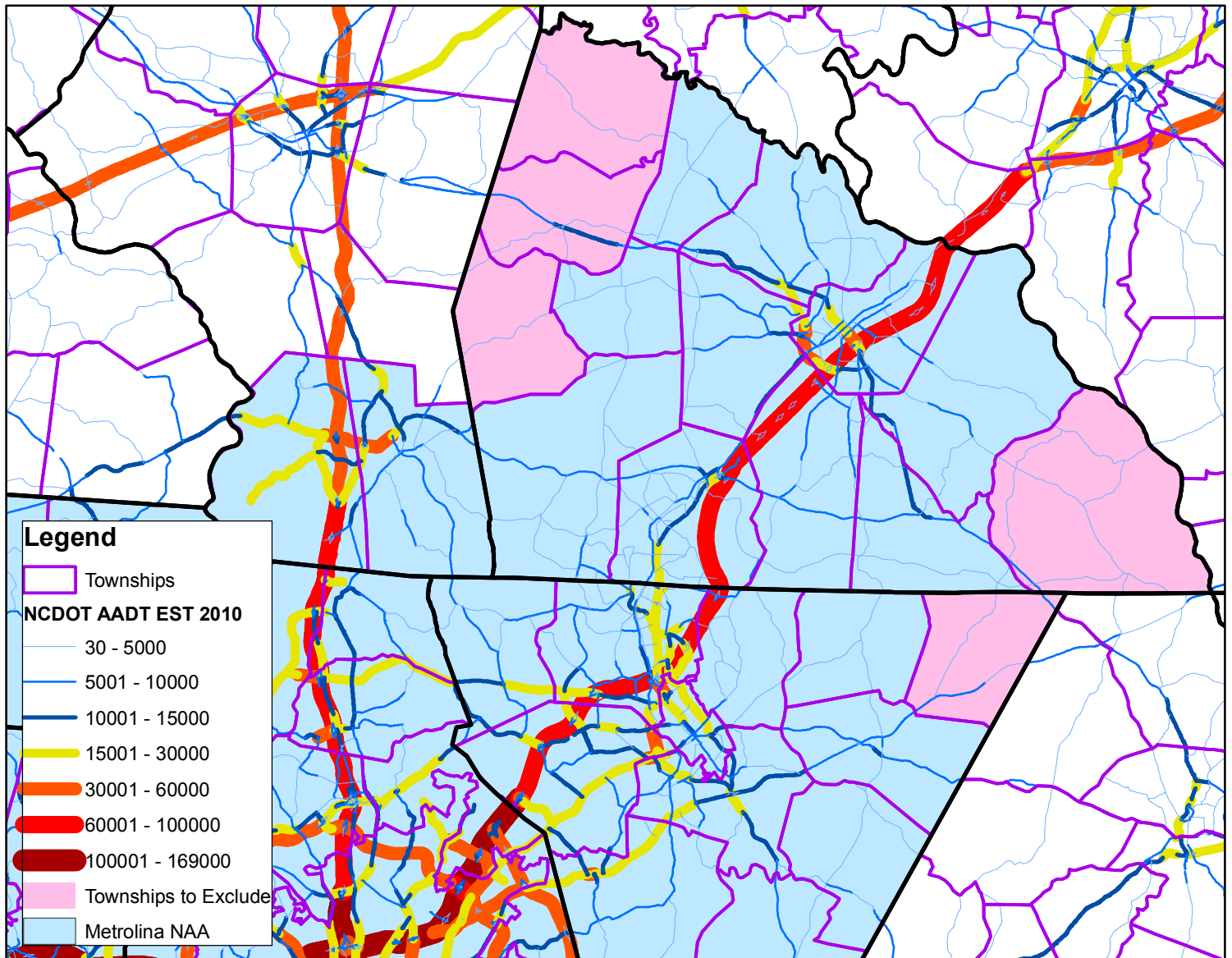
Metrolina Estimated Average Annual Daily Traffic 2010



Metrolina Estimated Average Annual Daily Traffic 2010



Metrolina Estimated Average Annual Daily Traffic 2010



Metrolina Estimated Average Annual Daily Traffic 2010

